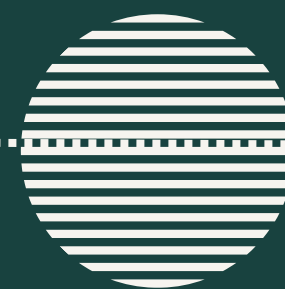




Stucon

STRUCTURING SUSTAINABLE TOMMORROW

SOLAR STRUCTURE



ABOUT US

Stucon

STRUCTURING SUSTAINABLE TOMMORROW



**LEADING SOLAR MODULE MOUNTING
STRUCTURE (MMS) MANUFACTURER**

OUR EXPERTISE LIES IN DESIGNING AND
MANUFACTURING BEST IN QUALITY
ADVANCED MOUNTING STRUCTURE

PROVIDING STRUCTURE IN MATERIALS
HDGI, GALVALULME AZ 150 , HR ,
POSMAC

OUR CLIENTS COME FROM EVERYWHERE



550+

CLIENTS WORLDWIDE

50+

TEAM & GROWING

100000+

KW INSTALLED



OUR VISION

**WITH OUR INTELLIGENT ASSEMBLY SOLUTIONS. WE
ENABLE PEOPLE TO SECURELY FASTEN SOLAR SYSTEM**



As a manufacturer of intelligent mounting solutions, we know the difficult requirements for fastening photovoltaic modules on different surfaces and structures. With clever solutions and engineering services, we help you with the planning and construction of photovoltaic systems. With our aerodynamically optimized substructures for solar modules, you will find the security and mechanical stability that you as an installer, planner or wholesaler need on a project-specific basis.



PRODUCT PHILOSOPHY

Our holistic approach to product development encompasses material selection, structural integrity, and environmental impact. All our solutions reflect this approach, balancing affordability, safety, and sustainability.

QUALITY

Our quality control process is uncompromising and we use only high quality steel and aluminium.

AFFORDABLE

Time saving assembly , competitive pricing .

DESIGN

Specifically designed to combat inclement weather on any terrain, ,our mounting structure can withstand harsh conditions .

SUSTAINABILITY

High Durability , low maintenance and corrosion free .

Stucon

STRUCTURING SUSTAINABLE TOMMORROW

We are
ISO 9001:2015
Certified !



OUR PRODUCTS

1 GROUND

FIX TILT

SEASONAL TILT

SOLAR PUMP

2 ROOF

RCC

TIN SHADE

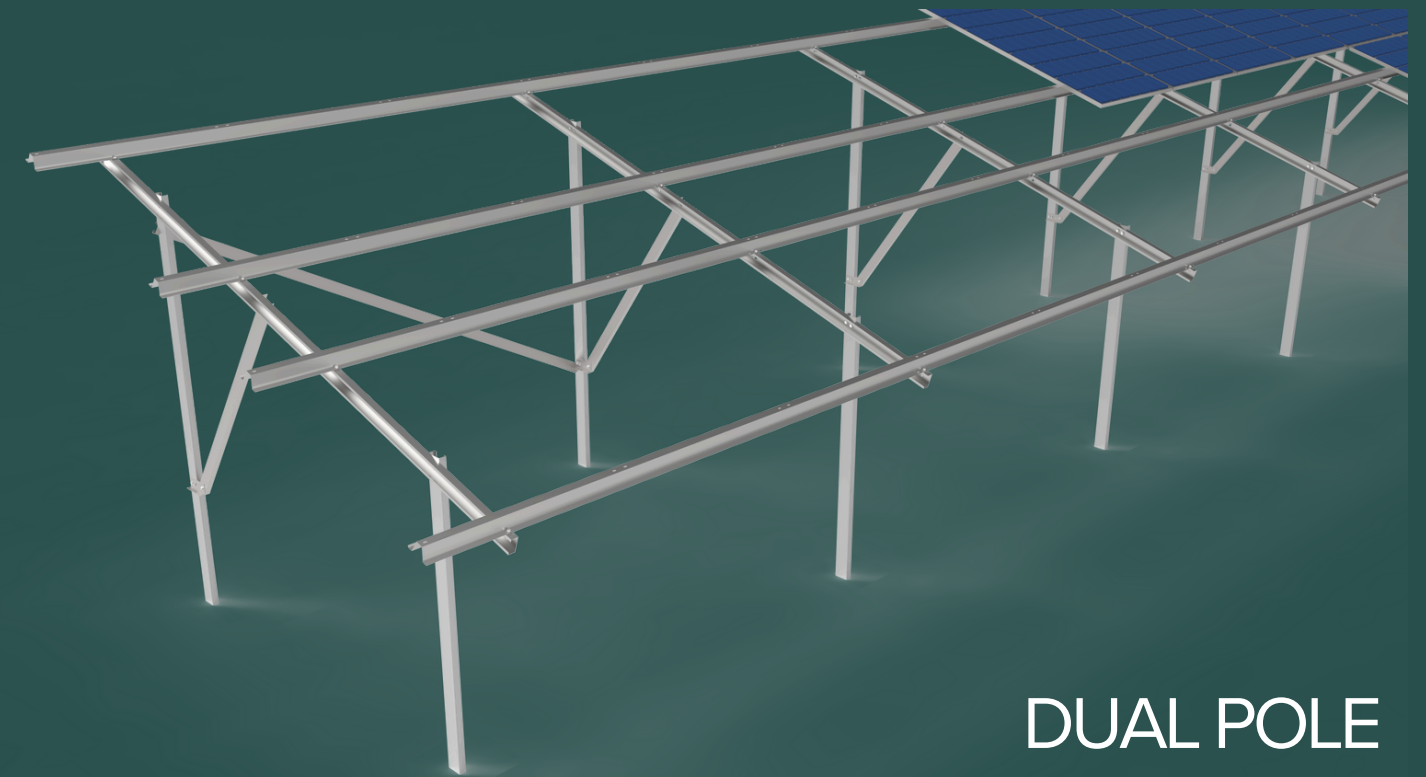
GROUND MOUNTED STRUCTURES

TECHNICAL DATA

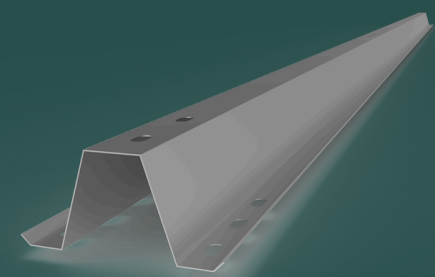
Stucon
STRUCTURING SUSTAINABLE TOMMORROW



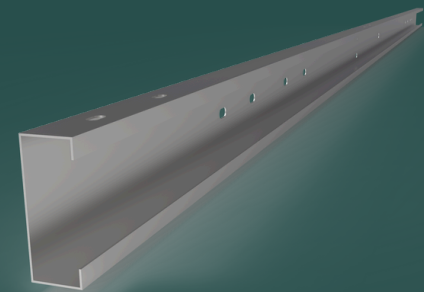
SINGLE POLE



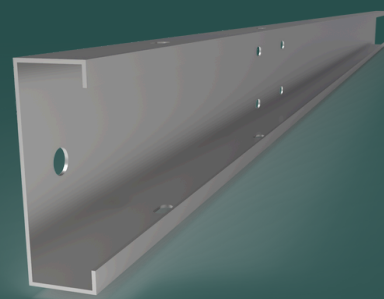
DUAL POLE



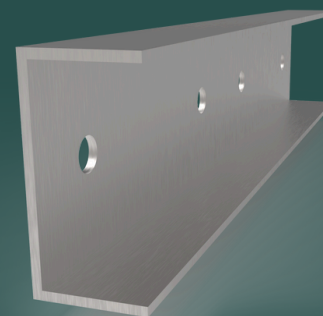
PURLIN



RAFTER



COLUMN



BRACING CONNECTOR

- Type of Structures : Fixed Tilt & Manual Tilt
- Tilt Angle : Depends on The Latitude

- Wind Speed : Upto 225 km/hour
- Material : HDGI, Posmac & Galvalume

OFF GRID PUMP STRUCTURE

TECHNICAL DATA

- Type of Structures : Manual Adjusting Dual Axis Structure
- Availablle Tilt : 0 to 40 Degree with 360 Degree Rotation Module.
- Orientation : Portrait & Landscape
- Wind Speed : Upto 200 km/hour.
- Material : HDGI, Posmac & Galvalume



Stucon

STRUCTURING SUSTAINABLE TOMMORROW

www.stucongroup.in

RCC ROOF STRUCTURE

TECHNICAL DATA

- Type of Structures : Single & Dual Pole Structure .
- Availblle Tilt : 0 to 40 Degree .
- Orientation : Portrait & Landscape
- Wind Speed : Upto 250km/hour.
- Material : HDGI, Posmac & Galvalume



Stucon
STRUCTURING SUSTAINABLE TOMMORROW

www.stucongroup.in

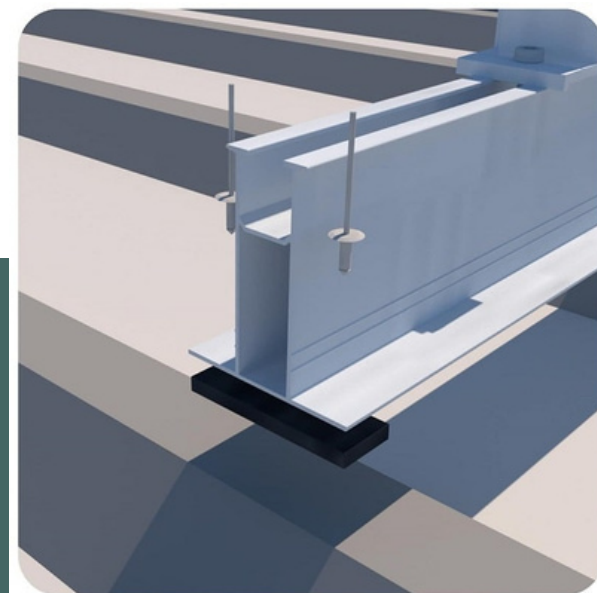
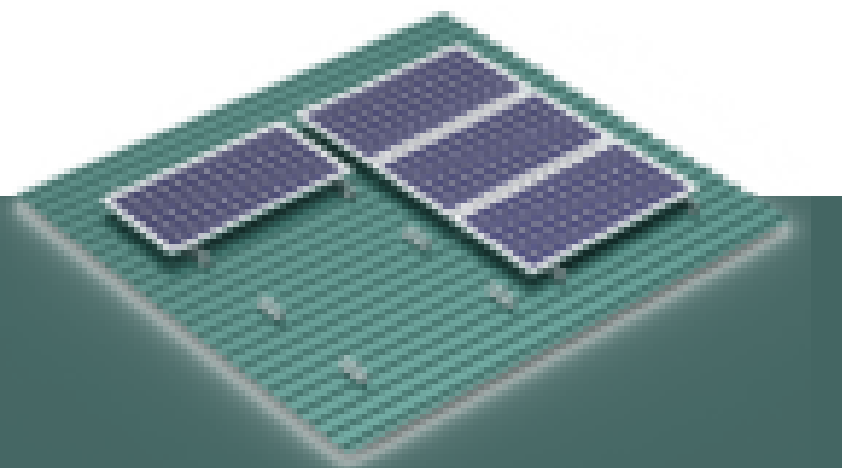
MONO RAIL



USED FOR
PORTRAIT ORIENTATIONS

PROPERTIES

- Available in Heights 61,71,81,101 MM .
- Material AL -6063 T6
- Design Wind speed up to 250kmph
- Available in Anodised /Non-Anodised



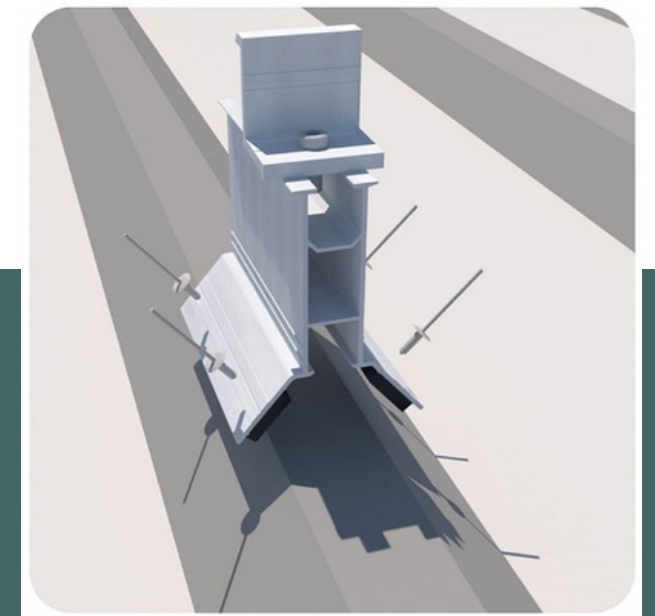
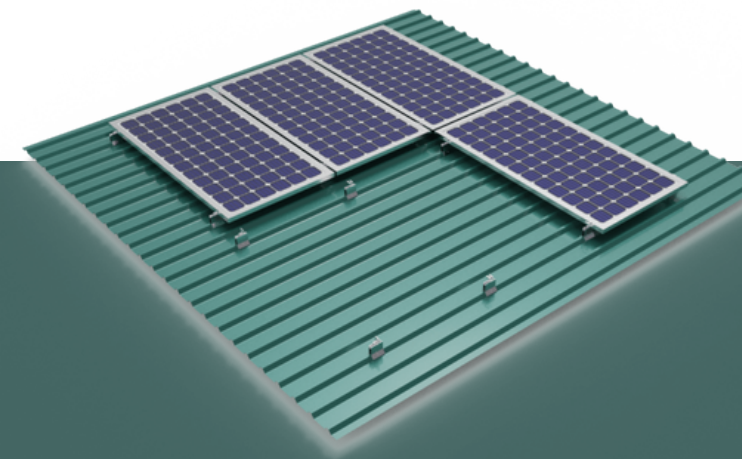
LANDSCAPE RAIL



USED FOR
LANDSCAPE ORIENTATIONS

PROPERTIES

- Available in 100 MM length
- Material AL -6063 T6
- Design Wind speed up to 250kmph
- Available in Anodised /Non-Anodised



Stucon
STRUCTURING SUSTAINABLE TOMMORROW

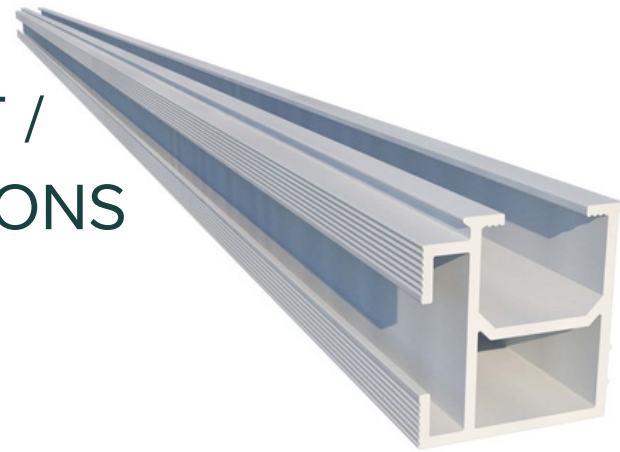
LONG RAIL



USED FOR PORTRAIT /
LANDSCAPE ORIENTATIONS

PROPERTIES

- Length Customisable as requirement .
- Material AL -6063 T6
- Design Wind speed up to 250kmph
- Available in Anodised /Non-Anodised



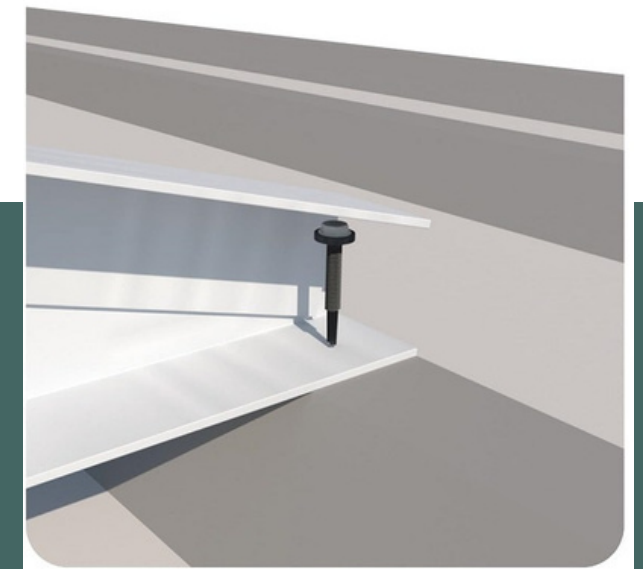
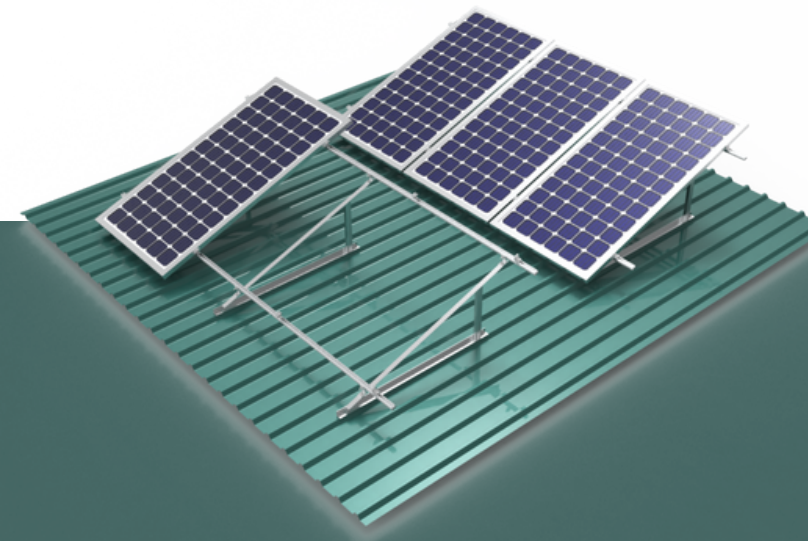
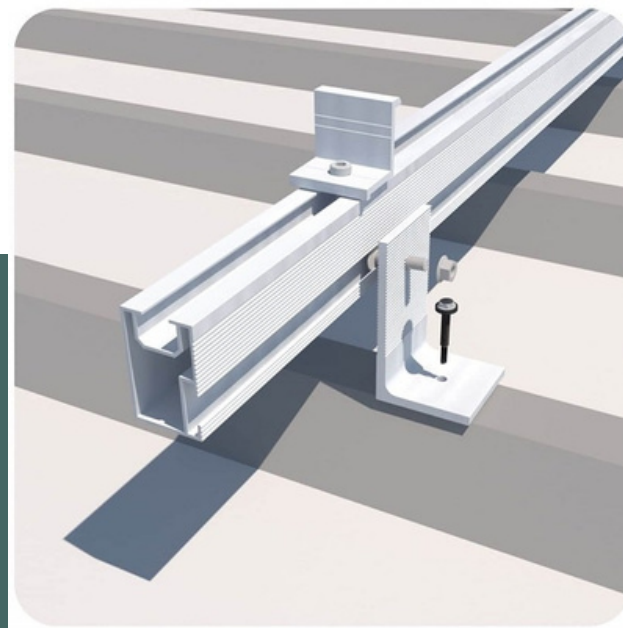
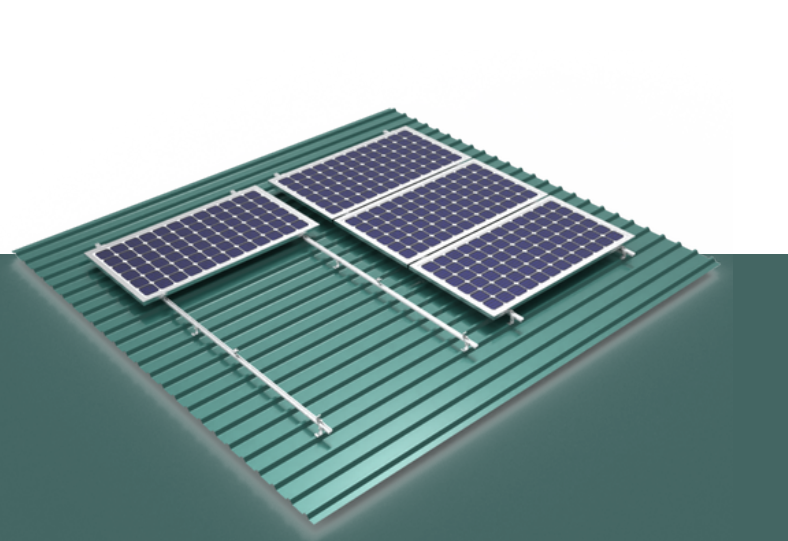
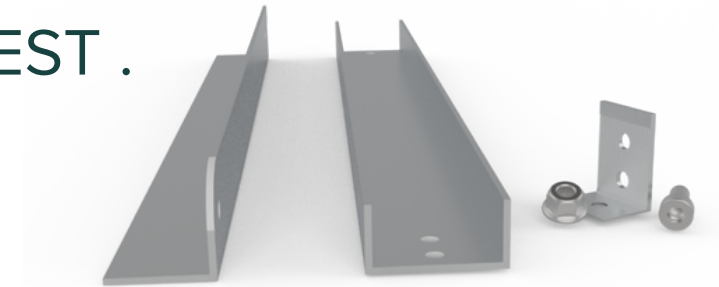
ELEVATED STRUCTURE



USED FOR POTRAIT ANGLING PANEL
WHERE ROOF ARE TILTED
NORTH , EAST AND WEST .

PROPERTIES

- 5-25 Degree Angle
- Material AL -6063 T6
- Design Wind speed up to 180kmph
- Available in Anodised /Non-Anodised



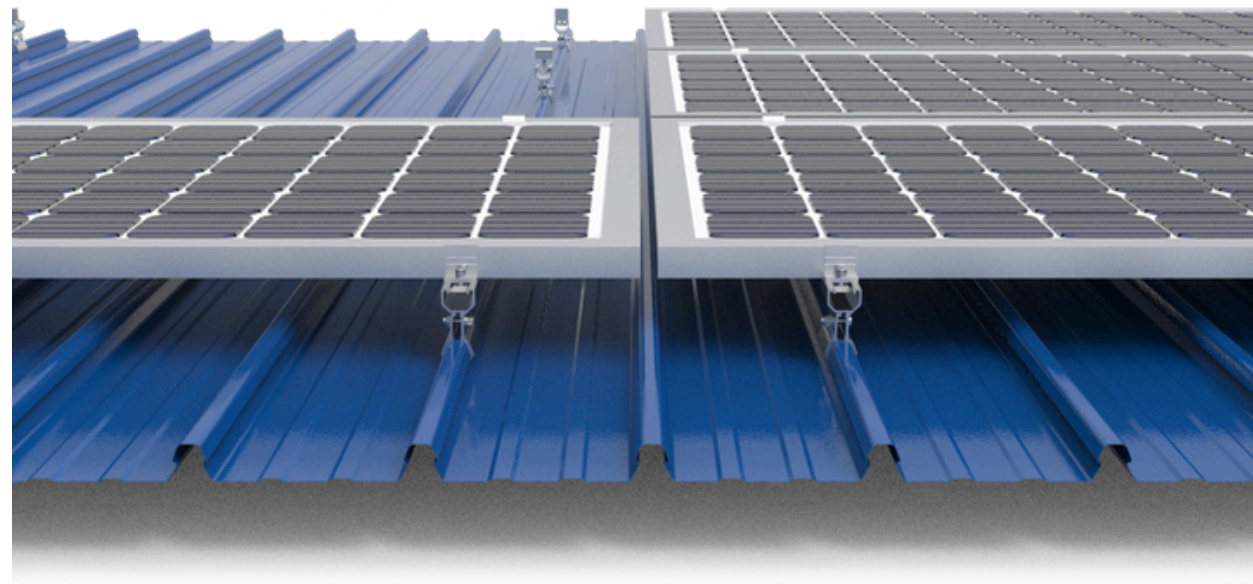
NON PENETRATIVE CLAMPS / SEAM CLAMP

ACCESSORIES

USED IN STANDING SEAM ROOF FOR
NON PENETRATION IN THE ROOF

PROPERTIES

- Material AL -6063 T6
- Design Wind speed up to 180kmph
- Available in Anodised /Non-Anodised



Stucon
STRUCTURING SUSTAINABLE TOMMORROW





CONTACT US

WWW.STUCONGROUP.IN

SALES@STUCONGROUP.IN

+91-9982007555

G-146, PALRA INDUSTRIAL AREA ,RAJASTHAN
-305001

